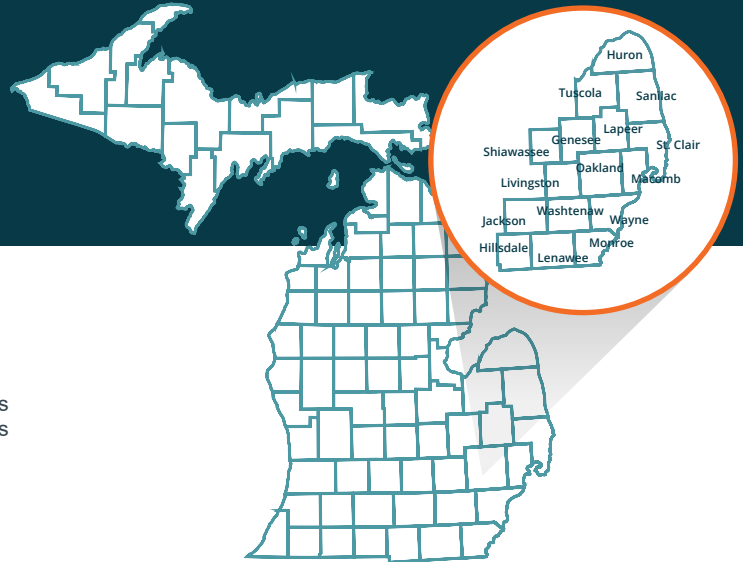


OAKLAND COUNTY LABOR SHED



Introduction

The Workforce Intelligence Network for Southeast Michigan (WIN) partnership is a collaboration of Michigan Works! Agencies (MWAs) and community colleges across a 16-county region in Michigan. The counties in the WIN partnership include: Genesee, Hillsdale, Huron, Jackson, Lapeer, Lenawee, Livingston, Macomb, Monroe, Oakland, Saint Clair, Sanilac, Shiawassee, Tuscola, Washtenaw, and Wayne, along with the City of Detroit.

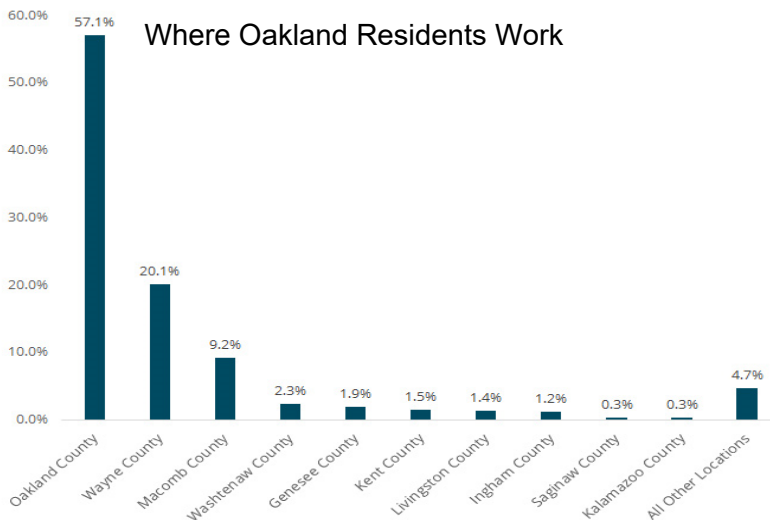
The WIN partnership region's labor shed highlights why, when it comes to talent, we must think regionally: The workforce is mobile. Although 90.4% of the region's workforce live and work¹ in the 16-county area, not all residents work in their home county. It is not uncommon for workers to commute one or two counties over for work. This means that the residents in every county should be ready for the job demands of employers hiring throughout southeast Michigan.

This document provides detailed information on where employees in the area commute to and from each day for work, how far they travel, along with other information about workers and businesses in the area. For more detail on the labor market please see WIN's Quarterly Labor Market Report publications.

Where Residents Work

In 2017, Oakland County's workforce consisted of 557,508 residents. 318,208 (57.1 percent) of the residents lived and worked within Oakland County, while the remaining 239,300 residents (42.9 percent) traveled outside of the county for work. The percentage of residents that traveled outside of the county for work has remained stable since 2015.

Oakland County residents' commutes increased somewhat between 2015 and 2017, rebounding from a decrease between 2014 and 2015. In 2017, 16.3 percent of the county's workforce (90,908 individuals) traveled more than 25 miles to their place of employment, compared to 15.8 percent (86,647 individuals) in 2015. Oakland has seen considerable job growth. Wayne County was the most popular destination outside of Oakland County for residents to find employment. 111,804 residents (20.1 percent of the county's workforce) traveled to Wayne County for employment in 2017, followed by 51,453 residents (9.2 percent of the county's workforce) that traveled to Macomb County.



39,534

BUSINESS ESTABLISHMENTS
IN 2017



242,731

JOBS POSTED ONLINE IN
2017



318,208

WORKERS THAT LIVE AND
WORK IN
OAKLAND COUNTY



90,908

RESIDENTS TRAVELING MORE
THAN 25 MILES TO WORK

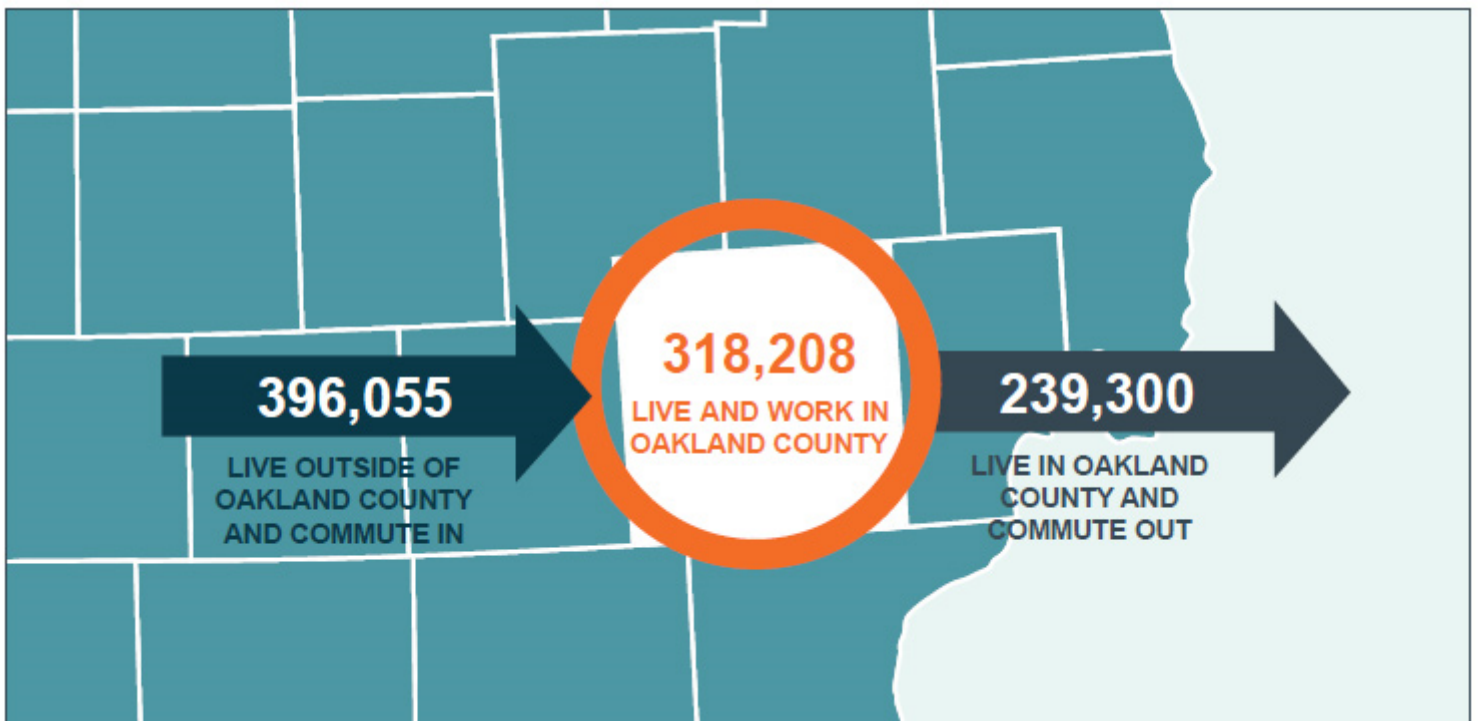
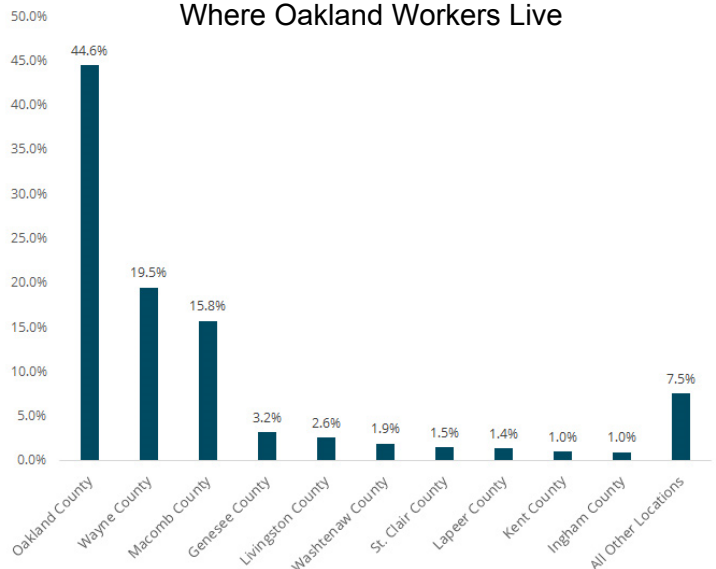
OAKLAND COUNTY LABOR SHED

Where Workers Live

Oakland County is a net importer of workers, making the county a job center. In 2017, 714,263 workers were employed in Oakland County. 396,055 (55.4 percent) of those workers were employed in Oakland but lived outside of its borders. Of those that traveled to Oakland County for work, 103,253 (26.1 percent) of the workers were 29 or younger. While Oakland County employers were able to attract many young workers in 2017, 170,497 (53.6 percent) of the internal jobs were filled by workers between the ages of 30 and 54. This indicates a desire for experienced workers in Oakland County.

Similar to the outflow of Oakland County residents, the great majority of workers that travel to Oakland reside in either Wayne or Macomb counties. 139,200 (19.5 percent) of Oakland County workers travel in from Wayne County followed by 112,513 (15.8 percent) that travel in from Macomb County. 148,436 (20.8 percent) of the 714,263 workers in Oakland County traveled more than 25 miles to their place of employment in 2017.

Where Oakland Workers Live



¹ This fact and labor shed statistics throughout this brief are analyzed from the U.S. Census OnTheMap, Center for Economic Studies (2017)

Data Sources: Economic Modeling Specialists International (Emsi), and U.S. Census OnTheMap
Analysis: Workforce Intelligence Network